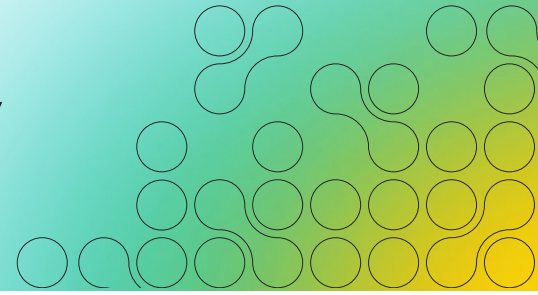


# Proven accuracy, complete efficiency



## Value props for all groups

- **Efficient reading:** Flagging of high confidence normal exams along with automated normal report generation streamlines reading, allowing focus on more complex cases
- **Simplicity:** One tool for pediatric and adult CXR
- **Improved detection of clinically significant findings**

## Radiologists, physicians

### **Supports workload management and timely diagnosis:**

Flagging of high confidence normal cases allows workflow management and timely reading of abnormal/complex cases

**Consistency and standardization:** AI decreases variation in performance

**Diagnostic support:** Lunit enables early detection and improves diagnosis through current-prior comparison

## Emergency, ICU

**Timely treatment of critical patients:** AI integration with the worklist helps doctors identify critical cases in a timely manner

**Support with acute findings:** INSIGHT CXR4 detects acute fractures, pneumothorax, pneumoperitoneum, consolidation, and pleural effusion, enabling physicians to make timely and confident treatment decisions

**Monitoring disease progression:** Current-prior comparison feature allows faster detection of interval changes for in-patients needing multiple CXRs

## Public Health, Screening Programs

**Early detection:** Proven best in nodule and TB detection by independent studies

**Opportunistic findings:** Detecting incidental abnormalities can lead to early treatment and better prognosis

**Workload reduction:** Seamless integration into existing protocols optimizes processes, identifies normal scans and provides automated reports for normals

## Hospitals/ Institutions

### **Technological advantage over competitors:**

Best AI in class to support patients

**Better ROI:** Cut costs associated with outsourcing (e.g., teleradiology) for normal cases, increase throughput without requiring proportional staffing increase

**Enhanced service quality:** Faster reporting and patient throughput

## Hospital engineer/ IT teams

**Intuitive tools:** Track error logs, troubleshooting status, processing time, application uptime

**Data driven workflow optimization:** Track input / output data distribution and trends.