

Lunit SCOPE[®]

Lunit SCOPE PD-L1 22C3 TPS
on navify[®] Digital Pathology

Easy-to-use AI software to enhance your productivity.

BENEFITS



Improved accuracy
and agreement



Efficiency gains



Seamless
interoperability

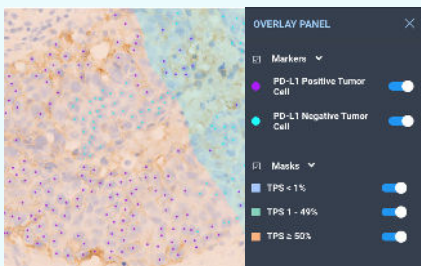
DESCRIPTION

- Artificial Intelligence (AI)-based digital pathology image analysis software
- Analyzes digitized immunohistochemistry (IHC) stained whole slide image (WSI) taken from formalin-fixed paraffin embedded (FFPE) tissue
- Indication and antibody: NSCLC / **PD-L1 22C3 pharmDx only**
- Assists in the detection and classification of PD-L1 expression

FEATURES

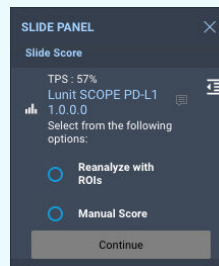
PD-L1 TPS Quantification

Tumor cell detection and TPS cutoffs



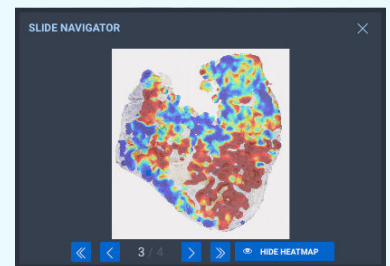
PD-L1 TPS Score

Slide-wide TPS score (%)



PD-L1 TPS Heatmap

Heatmap in blue (0%) to red (100%)



For Research Use Only

Not for use in diagnostic procedures or decisions.
Product not yet commercialized in the US.

 Lunit

© Lunit Inc. All rights reserved.
oncology@lunit.io

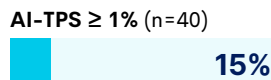
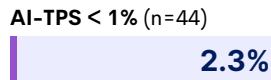
Boost your efficiency with AI-Powered speed and accuracy

Improves Accuracy

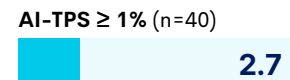
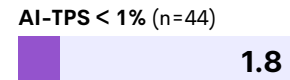
A study shows that Lunit SCOPE PD-L1 is more accurate for TPS scoring for edge cases. ⁽¹⁾

AI Analysis of Edge Cases⁽¹⁾ (TPS < 1% by Human Pathologists)

Objective Response Rate



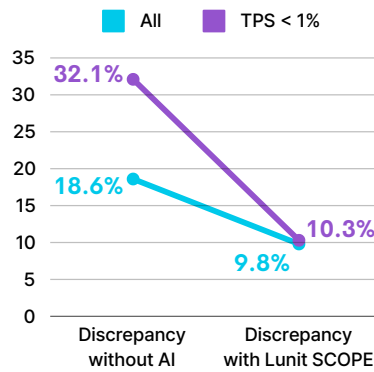
Progression Free Survival (months)



Improves Scoring Agreement

Lunit SCOPE PD-L1 is proven to assist in reading consistency and improve scoring agreement by providing objective and reliable analysis results. ⁽²⁾

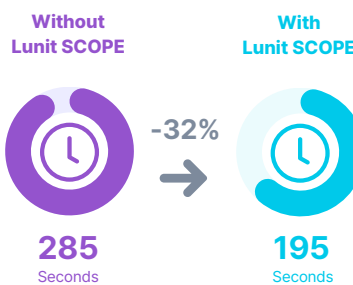
PD-L1 TPS Scoring Task⁽²⁾ (n=497)



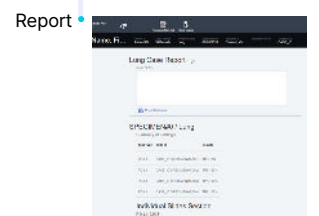
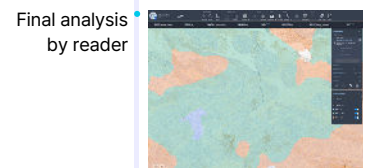
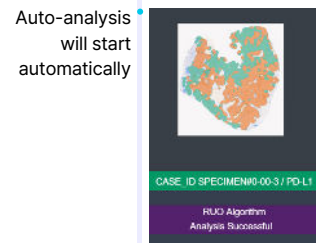
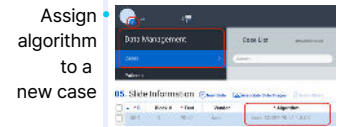
Shortens Reading Time

A study shows that Lunit SCOPE PD-L1 helps to reduce TPS reading time by 32% ⁽³⁾

Mean Time to Read TPS⁽³⁾



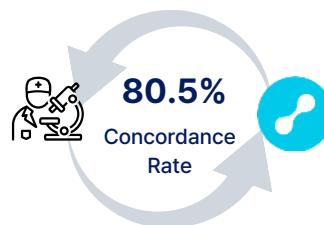
Streamlined Workflow



References:

- Kim H. et al. 2024. Clinical Validation of Artificial Intelligence-Powered PD-L1 Tumor Proportion Score Interpretation for Immune Checkpoint Inhibitor Response Prediction in Non-Small Cell Lung Cancer, JCO Precis Oncol, 2024;8: e2300556.
- Choi S. et al. 2022. AI-powered programmed death ligand 1 analyser reduces interobserver variation in tumour proportion score for non-small cell lung cancer with better prediction of immunotherapy response, EJC, 2022 Jul;170:17-26.
- Kim S. et al. 2022. Observer performance study to examine the feasibility of the AI-powered PD-L1 analyzer to assist pathologists' assessment of PD-L1 expression using tumor proportion score in non-small cell lung cancer, JCO, 2022;40(16)

Concordance Rate with Human Pathologists⁽¹⁾



For Research Use Only

Not for use in diagnostic procedures or decisions.
Product is not yet commercialized in the US.